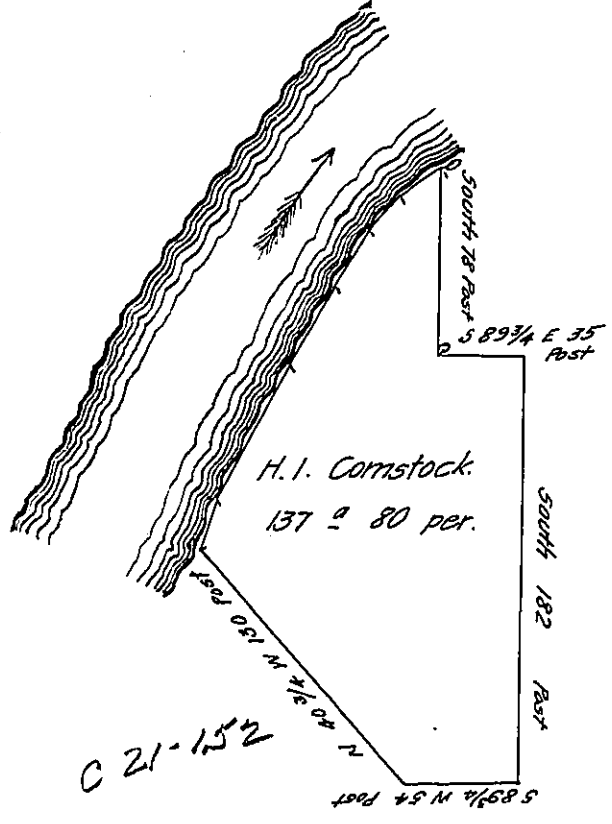


Courses & distances down the River to Hemlock

- No 1 N 20 1/4 E 24
- 2 N 30 1/4 E 65
- 3 N 27 1/2 E 38
- 4 N 32 1/2 E 30
- 5 N 47 1/2 E 18
- 6 N 51 1/2 E 20 to Hemlock



D-4 137

John Witherup
Now Vacant

D. & I. McQuiston

Draft of a tract of land situate in Scrubgrass Township Venango
 County South of and adjoining the Allegheny River below the mouth of Big Scrub-
 grass Creek. Surveyed April 8th 1865 for Henry I. Comstock in pursuance of a
 Warrant granted to him dated 3^d day of March 1865

Hon. J. P. Barr

Wm. Hilands C. S.

Surveyor General.

IN TESTIMONY that the above is a copy of the original remaining on file in
 the Department of Internal Affairs of Pennsylvania, made
 conformably to an Act of Assembly approved the 16th day of
 February, 1833, I have hereunto set my Hand and caused
 the Seal of said Department to be affixed at Harrisburg,
 this ninth day of March 1908

Henry Howard

Secretary of Internal Affairs.